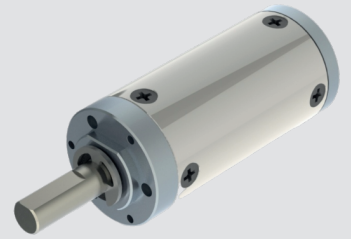


GB22K



Planetary Reduction Gearhead - 0.1 to 0.6Nm

Design

Gearhead GB22K is specially designed to cater precise and compact application in a cylindrical frame with centre shaft. GB22K comes with plastic ring gear & all plastic gears. The output bearing is robust and is made of sintered bronze (ball bearing on special request). The entire gearhead is permanently lubricated and therefore requires no maintenance. Brushed and Brushless DC Motors upto 24mm diameter are generally mounted on this gearhead to provide a compact.

Technical Data

Gear type		Spur Gears
Gear Torque	Nm	0.1 To 0.6
Axial load	N	15
Radial force	N	45
Output Bearings		Sintered bronze (Ball-bearing on special request)
Output shafts	mm	Ø 6 (others on special request)
Ambient temperature operation	°C	-15....+55°C (+80°C on special request #)
Enclosure	IP	40 (As per IEC 60529)

Corresponding o/p torque rating of gearhead will be reduced

Gearhead Data

Reduction		3.71	5.18	13.73	19.2	26.85	35*	50.89	71.16	99.51	139.14	188.61	263.73	369.76	515.63	720.99	938.85*
Number of stages		1	1	2	2	2	2	3	3	3	3	4	4	4	4	4	4
Torque	Nm	0.1	0.1	0.2	0.2	0.2	0.2	0.4	0.4	0.4	0.4	0.6	0.6	0.6	0.6	0.6	0.6
Gear Box Length (L)	mm	27.2	27.2	33.2	33.2	33.2	33.2	39.2	39.2	39.2	39.2	45.2	45.2	45.2	45.2	45.2	45.2

Note: Ratios marked with * suffix available on special request

Dimensional Drawing

