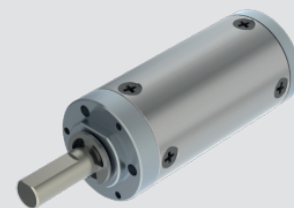


# GB22P



Planetary Reduction Gearhead - 0.2 to 1.25 Nm

## Design

Gearhead GB22P is specially designed to cater precise and compact application in a cylindrical frame with centre shaft. This is a planetary gear box with the possibility of polyacetal gears in first stage (for low noise) and remaining stages being sintered metal or hardened metal (on special request). The output bearing is robust and is made of sintered bronze (ball bearing on special request). The entire gearhead is permanently lubricated and therefore requires no maintenance. Brushed and Brushless DC Motors upto 24mm diameter are generally mounted on this gearhead to provide a compact and yet powerful drive.

## Technical Data

Gear type		Spur Gears
Gear Torque	Nm	0.2 to 1.25
Axial load	N	15
Radial force	N	50
Output Bearings		Sintered bronze (Ball-bearing on special request)
Output shafts	mm	Ø 6 (others on special request)
Ambient temperature operation	°C	-15.....+80 °C (+120°C on special request #)
Enclosure	IP	40 (As per IEC 60529)

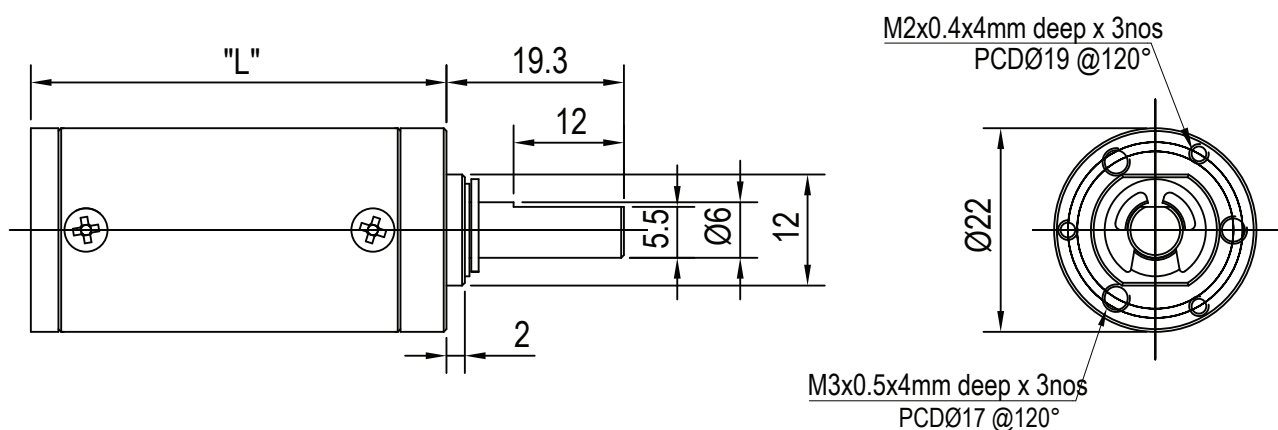
# Corresponding o/p torque rating of gearhead will be reduced

## Gearhead Data

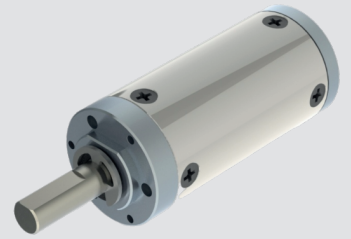
Reduction		3.71	5.18	13.73	19.2	26.85	35*	50.89	71.16	99.51	139.14	188.61	263.73	369.76	515.63	720.99	938.85*
Number of stages		1	1	2	2	2	2	3	3	3	3	4	4	4	4	4	4
Torque	Nm	0.2	0.2	0.4	0.4	0.4	0.4	0.8	0.8	0.8	0.8	1.25	1.25	1.25	1.25	1.25	1.25
Gear Box Length (L)	mm	27.2	27.2	33.2	33.2	33.2	33.2	39.2	39.2	39.2	39.2	45.2	45.2	45.2	45.2	45.2	45.2

Note: Ratios marked with \* suffix available on special request

## Dimensional Drawing



# GB22K



Planetary Reduction Gearhead - 0.1 to 0.6Nm

## Design

Gearhead GB22K is specially designed to cater precise and compact application in a cylindrical frame with centre shaft. GB22K comes with plastic ring gear & all plastic gears. The output bearing is robust and is made of sintered bronze (ball bearing on special request). The entire gearhead is permanently lubricated and therefore requires no maintenance. Brushed and Brushless DC Motors upto 24mm diameter are generally mounted on this gearhead to provide a compact.

## Technical Data

Gear type		Spur Gears
Gear Torque	Nm	0.1 To 0.6
Axial load	N	15
Radial force	N	45
Output Bearings		Sintered bronze (Ball-bearing on special request)
Output shafts	mm	Ø 6 (others on special request)
Ambient temperature operation	°C	-15....+55°C (+80°C on special request # )
Enclosure	IP	40 (As per IEC 60529)

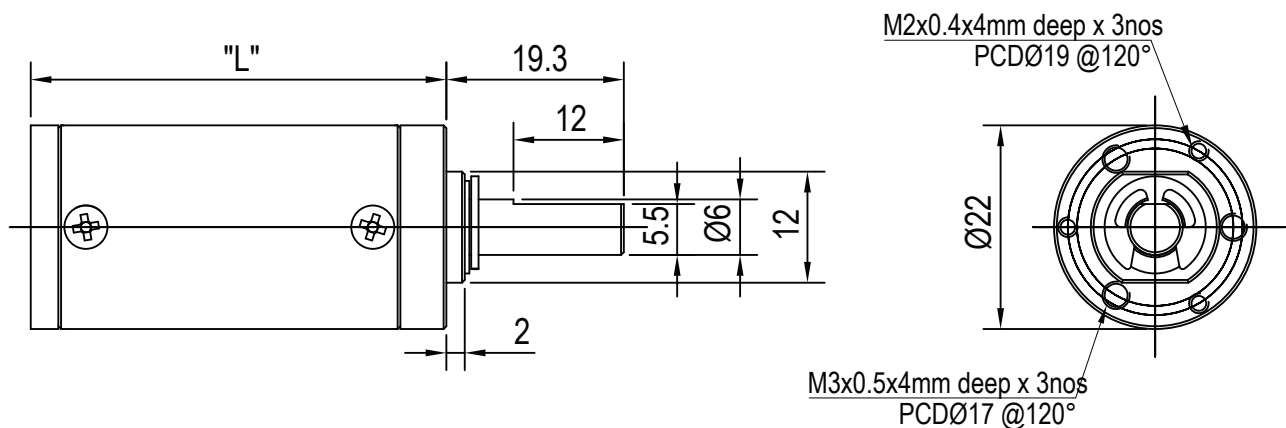
# Corresponding o/p torque rating of gearhead will be reduced

## Gearhead Data

Reduction		3.71	5.18	13.73	19.2	26.85	35*	50.89	71.16	99.51	139.14	188.61	263.73	369.76	515.63	720.99	938.85*
Number of stages		1	1	2	2	2	2	3	3	3	3	4	4	4	4	4	4
Torque	Nm	0.1	0.1	0.2	0.2	0.2	0.2	0.4	0.4	0.4	0.4	0.6	0.6	0.6	0.6	0.6	0.6
Gear Box Length (L)	mm	27.2	27.2	33.2	33.2	33.2	33.2	39.2	39.2	39.2	39.2	45.2	45.2	45.2	45.2	45.2	45.2

Note: Ratios marked with \* suffix available on special request

## Dimensional Drawing



# GB28P



Planetary Reduction Gearhead - 0.5 to 4 Nm

## Design

Gearhead GB28P is specially designed to cater precise and compact application in a cylindrical frame with centre shaft. This is a planetary gear box with the possibility of polyacetal gears in first stage (for low noise) and remaining stages being sintered metal or hardened metal (on special request) . The output bearing is robust and is made of sintered bronze (ball bearing on special request). The entire gearhead is permanently lubricated and therefore requires no maintenance.Brushed and Brushless DC Motors upto 30mm diameter are generally mounted on this gearhead to provide a compact drive.

## Technical Data

Gear type		Spur Gears
Gear Torque	Nm	0.5 to 4
Axial Load	N	15
Radial force	N	50
Output Bearings		Sintered bronze (Ball-bearing on special request)
Output shafts	mm	Ø 6 (others on special request)
Ambient temperature operation	°C	-15.....+80 °C (+120°C on special request #)
Enclosure	IP	40 (As per IEC 60529)

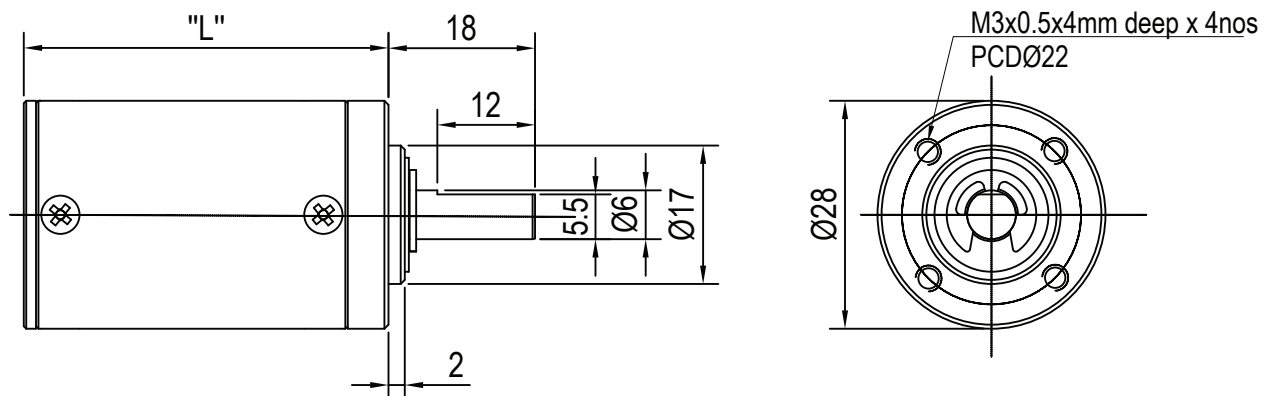
# Corresponding o/p torque rating of gearhead will be reduced

## Gearhead Data

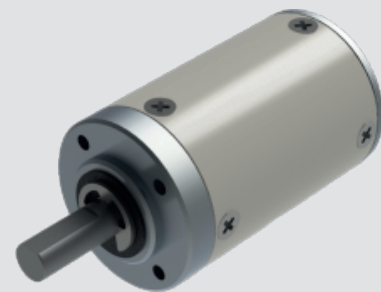
Reduction		3.71	5.18	13.73	19.2	26.85	35*	50.89	71.16	99.51	139.14	188.61	263.73	369.76	515.63	720.99	938.85*
Number of stages		1	1	2	2	2	2	3	3	3	3	4	4	4	4	4	4
Torque	Nm	0.5	0.5	0.8	0.8	0.8	0.8	2	2	2	2	4	4	4	4	4	4
Gear Box Length (L)	mm	25.6	25.6	32	32	32	32	38.4	38.4	38.4	38.4	44.8	44.8	44.8	44.8	44.8	44.8

Note: Ratios marked with \* suffix available on special request

## Dimensional Drawing



# GB28K



Planetary Reduction Gearhead - 0.4 to 2 Nm

## Design

Gearhead GB28K is specially designed to cater precise and compact application in a cylindrical frame with centre shaft. This is a planetary gear box with all plastic gears . The output bearing is robust and is made of powdered metal (ball bearing on special request). The entire gearhead is permanently lubricated and therefore requires no maintenance. Brushed and Brushless DC Motors upto 30mm diameter are generally mounted on this gearhead to provide a compact and yet powerful drive.

## Technical Data

Gear type		Spur Gears
Gear Torque	Nm	0.4 to 2
Axial thrust	N	15
Lateral force	N	45
Output Bearings		Sintered Bronze (Ball-bearing on special request)
Output shafts	mm	Ø 6 (others on special request)
Ambient temperature operation	°C	-15.....+55 °C (+80°C on special request #)
Enclosure	IP	40 (As per IEC 60529)

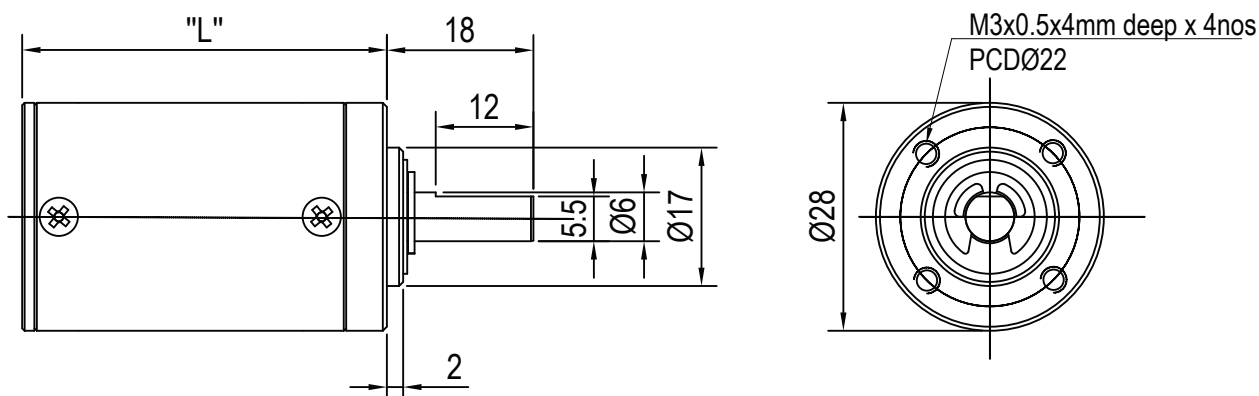
# Corresponding o/p torque rating of gearhead will be reduced

## Gearhead Data

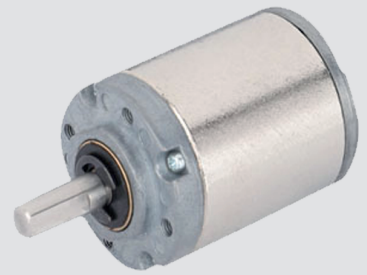
Reduction		3.71	5.18	13.73	19.2	26.85	35*	50.89	71.16	99.51	139.14	188.61	263.73	369.76	515.63	720.99	938.85*
Number of stages		1	1	2	2	2	2	3	3	3	3	4	4	4	4	4	4
Torque	Nm	0.4	0.4	0.8	0.8	0.8	0.8	1.5	1.5	1.5	1.5	2	2	2	2	2	2
Gear Box Length (L)	mm	25.6	25.6	32	32	32	32	38.4	38.4	38.4	38.4	44.8	44.8	44.8	44.8	44.8	44.8

Note: Ratios marked with \* suffix available on special request

## Dimensional Drawing



# GB32P



Planetary Reduction Gearhead - 0.5 to 5 Nm

## Design

Gearhead GB32P is specially designed to cater precise and compact application in a cylindrical frame with centre shaft. This is a planetary gear box with the possibility of polyacetal gears in first stage (for low noise) and remaining stages being sintered metal or hardened metal (on special request). The output bearing is robust and is made of sintered bronze (ball bearing on special request). The entire gearhead is permanently lubricated and therefore requires no maintenance. Brushed and Brushless DC Motors upto 36mm diameter are generally mounted on this gearhead to provide a compact and yet powerful drive.

## Technical Data

Gear type		Spur Gears
Gear Torque	Nm	0.5 to 5
Axial Load	N	30
Radial force	N	100
Output Bearings		Sintered bronze (Ball-bearing on special request)
Output shafts	mm	Ø 6 (others on special request)
Ambient temperature operation	°C	-15.....+80 °C (+120°C on special request #)
Enclosure	IP	40 (As per IEC 60529)

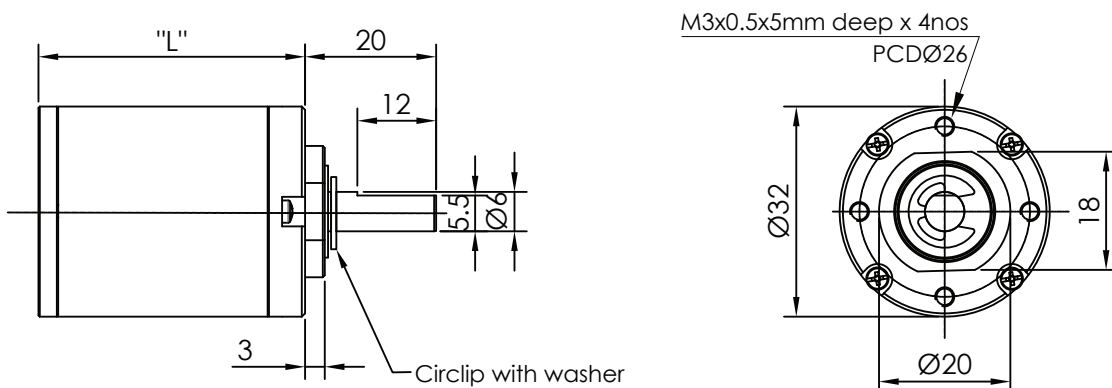
# Corresponding o/p torque rating of gearhead will be reduced

## Gearhead Data

Reduction		3.71	5.18	13.73	19.2	26.85	35*	50.89	71.16	99.51	139.14	188.61	263.73	369.76	515.63	720.99	938.85*
Number of stages		1	1	2	2	2	2	3	3	3	3	4	4	4	4	4	4
Torque	Nm	0.5	0.5	0.8	0.8	0.8	0.8	2	2	2	2	5	5	5	5	5	5
Gear Box Length (L)	mm	20.6	20.6	27	27	27	27	33.4	33.4	33.4	33.4	39.8	39.8	39.8	39.8	39.8	39.8

Note: Ratios marked with \* suffix available on special request

## Dimensional Drawing



# GB32K



Planetary Reduction Gearhead - 0.4 to 2 Nm

## Design

Gearhead GB32K is specially designed to cater precise and compact application in a cylindrical frame with centre shaft. GB32K comes with plastic ring gear & all plastic gears. The output bearing is robust and is made of sintered bronze (ball bearing on special request). The entire gearhead is permanently lubricated and therefore requires no maintenance. Brushed and Brushless DC Motors upto 36mm diameter are generally mounted on this gearhead to provide a compact drive.

## Technical Data

Gear type		Spur Gears
Gear Torque	Nm	0.4 to 2
Axial Load	N	15
Lateral force	N	45
Output Bearings		Sintered bronze (Ball-bearing on special request)
Output shafts	mm	Ø 6 (others on special request)
Ambient temperature operation	°C	-15....+55 °C (+80 °C on special request #)
Enclosure	IP	40 (As per IEC 60529)

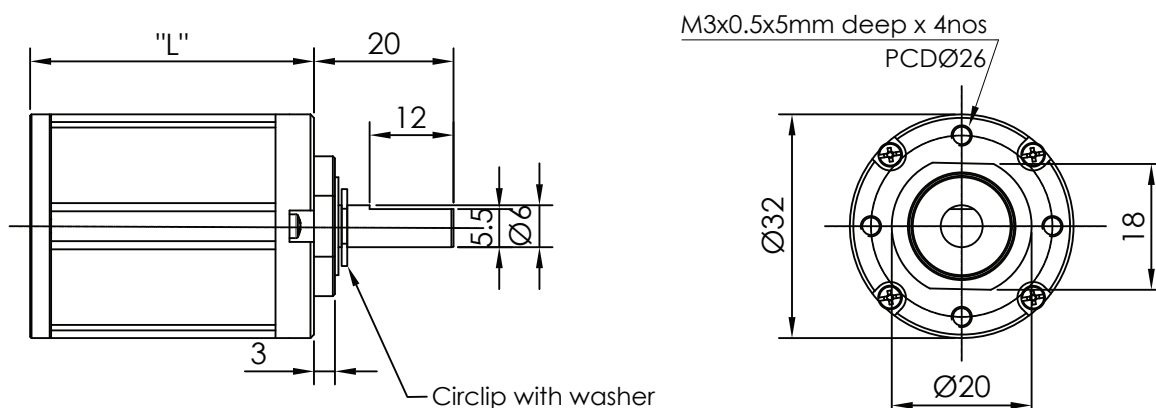
# Corresponding o/p torque rating of gearhead will be reduced

## Gearhead Data

Reduction		3.71	5.18	13.73	19.2	26.85	35*	50.89	71.16	99.51	139.14	188.61	263.73	369.76	515.63	720.99	938.85*
Number of stages		1	1	2	2	2	2	3	3	3	3	4	4	4	4	4	4
Torque	Nm	0.4	0.4	0.8	0.8	0.8	0.8	1.5	1.5	1.5	1.5	2	2	2	2	2	2
Gear Box Length (L)	mm	21.4	21.4	27.8	27.8	27.8	27.8	34.2	34.2	34.2	34.2	40.6	40.6	40.6	40.6	40.6	40.6

Note: Ratios marked with \* suffix available on special request

## Dimensional Drawing



## GB36P



Planetary Reduction Gearhead - 0.5 to 5 Nm

### Design

Gearhead GB36P is specially designed to cater precise and compact application in a cylindrical frame with centre shaft. This is a planetary gear box with the possibility of polyacetal gears in first stage (for low noise) and remaining stages being sintered metal or hardened metal (on special request). The output bearing is robust and is made of ball bearing (Sintered on special request). The entire gearhead is permanently lubricated and therefore requires no maintenance. Brushed and Brushless DC Motors upto 42mm diameter are generally mounted on this gearhead to provide a compact and yet powerful drive.

### Technical Data

Gear type		Spur Gears
Gear Torque	Nm	0.5 to 5
Axial Load	N	30
Radial force	N	100
Output Bearings		Sintered bronze (Ball-bearing on special request)
Output shafts	mm	Ø 8 (others on special request)
Ambient temperature operation	°C	-15....+80 °C (+120°C on special request #)
Enclosure	IP	40 (As per IEC 60529)

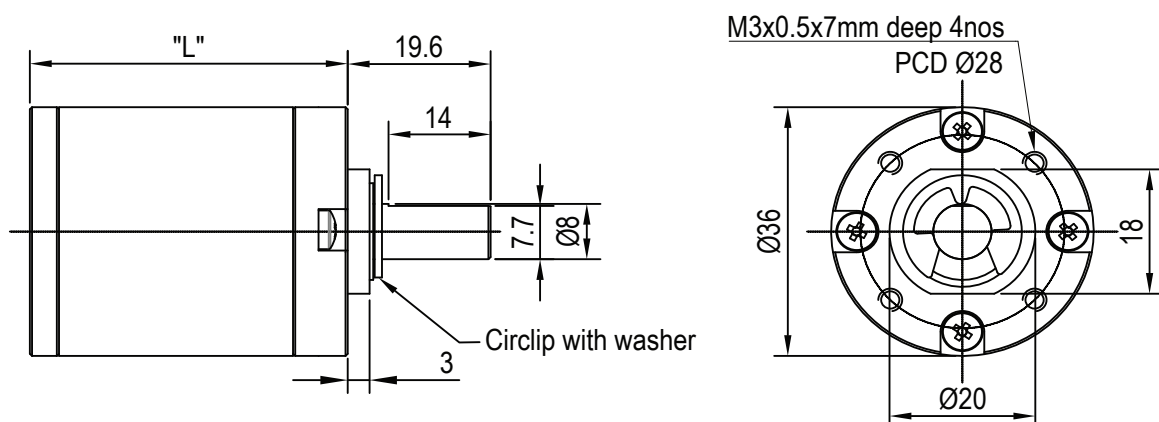
# Corresponding o/p torque rating of gearhead will be reduced

### Gearhead Data

Reduction		3.71	5.18	13.73	19.2	26.85	35*	50.89	71.16	99.51	139.14	188.61	263.73	369.76	515.63	720.99	938.85*
Number of stages		1	1	2	2	2	2	3	3	3	3	4	4	4	4	4	4
Torque P Series	Nm	0.5	0.5	0.8	0.8	0.8	0.8	2	2	2	2	5	5	5	5	5	5
Gear Box Length (L)	mm	23.6	23.6	30	30	30	30	36.4	36.4	36.4	36.4	42.8	42.8	42.8	42.8	42.8	42.8

Note: Ratios marked with \* suffix available on special request

### Dimensional Drawing



# GB36K



Planetary Reduction Gearhead - 0.5 to 2 Nm

## Design

Gearhead GB36K is specially designed to cater precise and compact application in a cylindrical frame with centre shaft. GB36K comes with plastic ring gear & all plastic gears. The entire gearhead is permanently lubricated and therefore requires no maintenance. Brushed and Brushless DC Motors upto 42mm diameter are generally mounted on this gearhead to provide a compact and yet powerful drive.

## Technical Data

Gear type		Spur Gears
Gear Torque	Nm	0.5 to 2
Axial Load	N	30
Radial Force	N	45
Output Bearings		Sintered bronze (Ball bearing on special request)
Output shafts	mm	Ø 8 (others on special request)
Ambient temperature operation	°C	-15.....+55 °C (+80 °C on special request #)
Enclosure	IP	40 (As per IEC 60529)

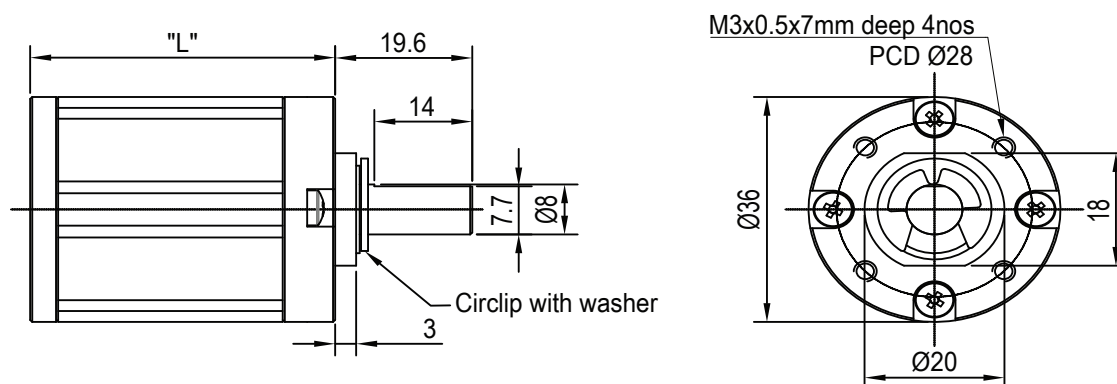
# Corresponding o/p torque rating of gearhead will be reduced

## Gearhead Data

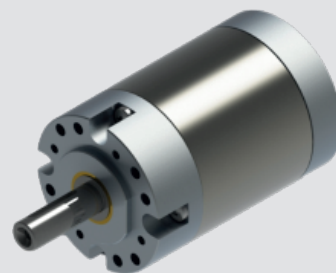
Reduction		3.71	5.18	13.73	19.2	26.85	35*	50.89	71.16	99.51	139.14	188.61	263.73	369.76	515.63	720.99	938.85*
Number of stages		1	1	2	2	2	2	3	3	3	3	4	4	4	4	4	4
Torque	Nm	0.5	0.5	0.8	0.8	0.8	0.8	1.5	1.5	1.5	1.5	2	2	2	2	2	2
Gear Box Length (L)	mm	24.4	24.4	30.8	30.8	30.8	30.8	37.2	37.2	37.2	37.2	43.6	43.6	43.6	43.6	43.6	43.6

Note: Ratios marked with \* suffix available on special request

## Dimensional Drawing



# GB42P



Planetary Reduction Gearhead - 3 to 18 Nm

## Design

Gearhead GB42P is specially designed to cater space constraint application with high torque in a cylindrical frame with centre shaft. This is a planetary gear box with the possibility of polyacetal gears in first stage (for low noise) and remaining stages being powder metal or hardened metal (on special request). The output bearing is robust and is made of sintered bronze (ball bearing on special request). The entire gearhead is permanently lubricated and therefore requires no maintenance. Brushed and Brushless DC Motors upto 52mm diameter are generally mounted on this gearhead to provide a compact and yet powerful drive.

## Technical Data

Gear type		Spur Gears
Gear Torque	Nm	3 to 18
Axial Load	N	110
Radial force	N	300
Output Bearings		Sintered bronze (Ball-bearing on special request)
Output shafts	mm	Ø 8 (others on special request)
Ambient temperature operation	°C	-15.....+80 °C (+120°C on special request #)
Enclosure	IP	40 (As per IEC 60529)

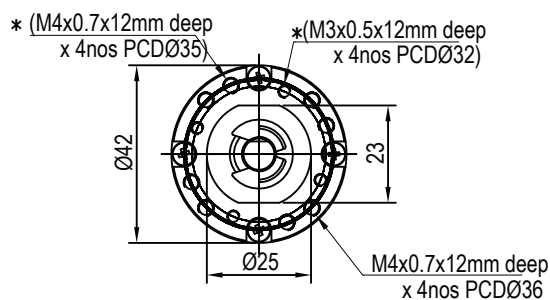
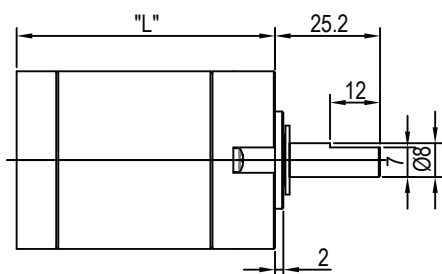
# Corresponding o/p torque rating of gearhead will be reduced

## Gearhead Data

Reduction		3.71	5.18	13.73	19.2	26.85	35*	50.89	71.16	99.51	139.14	188.61	263.73	369.76	515.63	720.99	938.85*
Number of stages		1	1	2	2	2	2	3	3	3	3	4	4	4	4	4	4
Torque	Nm	3	3	6	6	6	6	10	10	10	10	18	18	18	18	18	18
Gear Box Length (L)	mm	41	41	48	48	48	48	55	55	55	55	62	62	62	62	62	62

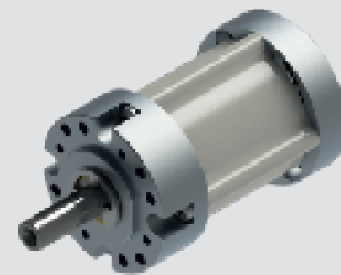
Note: Ratios marked with \* suffix available on special request

## Dimensional Drawing



Note-On special request \*suffix

# GB42K



Planetary Reduction Gearhead - 0.8 to 4 Nm

## Design

Gearhead GB42K is specially designed to cater precise and compact application in a cylindrical frame with centre shaft. This is a planetary gear box with the plastic gears. The output bearing is robust and is made of sintered bronze (ball bearing on special request). The entire gearhead is permanently lubricated and therefore requires no maintenance. Brushed and Brushless DC Motors upto 52mm diameter are generally mounted on this gearhead to provide a compact and yet powerful drive.

## Technical Data

Gear type		Spur Gears
Gear Torque	Nm	0.8 to 4
Axial Load	N	30
Radial force	N	45
Output Bearings		Sintered bronze (Ball-bearing on special request)
Output shafts	mm	Ø 8 (others on special request)
Ambient temperature operation	°C	-15.....+55 °C (+80°C on special request #)
Enclosure	IP	40 (As per IEC 60529)

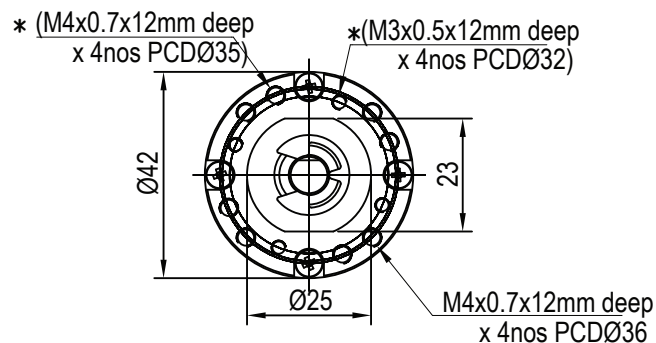
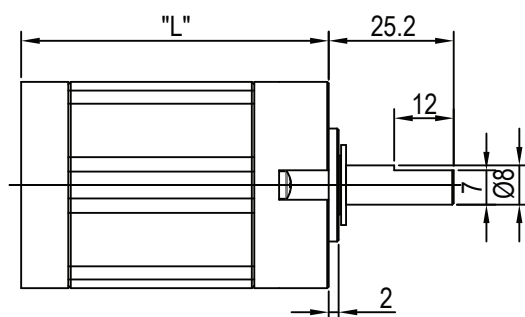
# Corresponding o/p torque rating of gearhead will be reduced

## Gearhead Data

Reduction		3.71	5.18	13.73	19.2	26.85	35*	50.89	71.16	99.51	139.14	188.61	263.73	369.76	515.63	720.99	938.85*
Number of stages		1	1	2	2	2	2	3	3	3	3	4	4	4	4	4	4
Torque	Nm	0.8	0.8	1.5	1.5	1.5	1.5	3	3	3	3	4	4	4	4	4	4
Gear Box Length (L)	mm	41	41	48	48	48	48	55	55	55	55	62	62	62	62	62	62

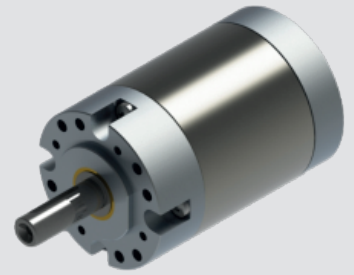
Note: Ratios marked with \* suffix available on special request

## Dimensional Drawing



Note-On special request \* suffix

# GB52P



Planetary Reduction Gearhead - 5 to 25 Nm

## Design

Gearhead GB52P is specially designed to cater space constant application with high torque in a cylindrical frame with centre shaft. This is a planetary gear box with all metal gears. Brushed and Brushless DC Motors upto 62mm diameter are generally mounted on this gearhead to provide a compact and yet powerful drive.

## Technical Data

Gear type		Spur Gears
Gear Torque	Nm	5 to 25
Axial Load	N	30
Radial force	N	450
Output Bearings		Ball bearing
Output shafts	mm	Ø 12 (others on special request)
Ambient temperature operation	°C	-15.....+80 °C (+120°C on special request #)
Enclosure	IP	40 (As per IEC 60529)

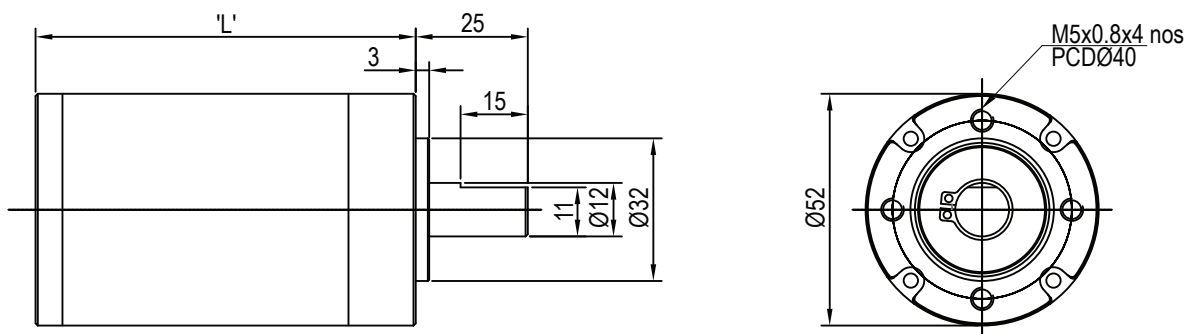
# Corresponding o/p torque rating of gearhead will be reduced

## Gearhead Data

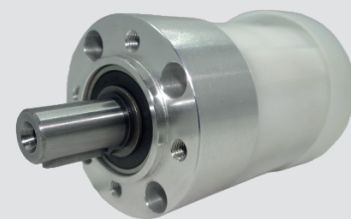
Reduction		3.71	5.18	13.73	19.2	26.85	35*	50.89	71.16	99.51	139.14	188.61	263.73	369.76	515.63	720.99	938.85*
Number of stages		1	1	2	2	2	2	3	3	3	3	4	4	4	4	4	4
Torque	Nm	5	5	10	10	10	10	15	15	15	15	25	25	25	25	25	25
Gear Box Length (L)	mm	44.4	44.4	56.4	56.4	56.4	56.4	68.4	68.4	68.4	68.4	80.4	80.4	80.4	80.4	80.4	80.4

Note: Ratios marked with \* suffix available on special request

## Dimensional Drawing



# GB52K



Planetary Reduction Gearhead - 2 to 10 Nm

## Design

Gearhead GB52K is specially designed to cater heavy duty application in a cylindrical frame with centre shaft. This is a planetary gear box with all plastic gears. The entire gearhead is permanently lubricated and therefore requires no maintenance. Brushed and Brushless DC Motors upto 62mm diameter are generally mounted on this gearhead to provide a compact and yet powerful drive.

## Technical Data

Gear type		Spur Gears
Gear Torque	Nm	2 to 10
Axial Load	N	150
Radial force	N	450
Output Bearings		Ball bearing
Output shafts	mm	Ø12 (others on special request)
Ambient temperature operation	°C	-15.....+55 °C (+80°C on special request #)
Enclosure	IP	40 (As per IEC 60529)

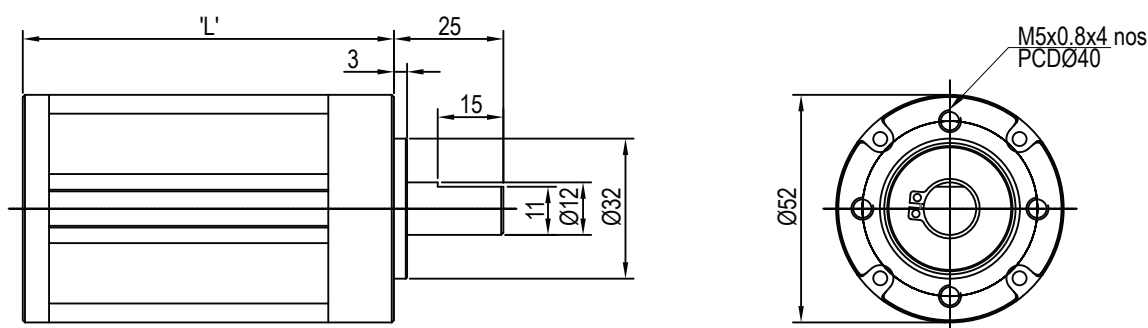
# Corresponding o/p torque rating of gearhead will be reduced

## Gearhead Data

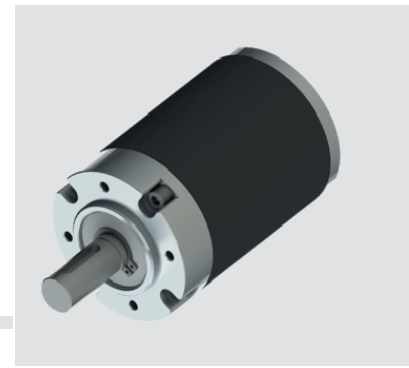
Reduction		3.71	5.18	13.73	19.2	26.85	35*	50.89	71.16	99.51	139.14	188.61	263.73	369.76	515.63	720.99	938.85*
Number of stages		1	1	2	2	2	2	3	3	3	3	4	4	4	4	4	4
Torque	Nm	2	2	4.5	4.5	4.5	4.5	7	7	7	7	10	10	10	10	10	10
Gear Box Length (L)	mm	44.4	44.4	56.4	56.4	56.4	56.4	68.4	68.4	68.4	68.4	80.4	80.4	80.4	80.4	80.4	80.4

Note: Ratios marked with \* suffix available on special request

## Dimensional Drawing



# GB62P



Planetary Reduction Gearhead - 12 to 50 Nm

## Design

Gearhead GB62P is specially designed to cater heavy duty application in a cylindrical frame with centre shaft. This is a planetary gear box with all metal gears. The entire gearhead is permanently lubricated and therefore requires no maintenance. Brushed and Brushless DC Motors upto 82mm diameter are generally mounted on this gearhead to provide a compact and yet powerful drive.

## Technical Data

Gear type		Spur Gears
Gear Torque	Nm	12 to 50
Axial Load	N	150
Radial force	N	520
Output Bearings		Ball bearing
Output shafts	mm	Ø 14 (others on special request)
Ambient temperature operation	°C	-15.....+80 °C (+120°C on special request #)
Enclosure	IP	40 (As per IEC 60529)

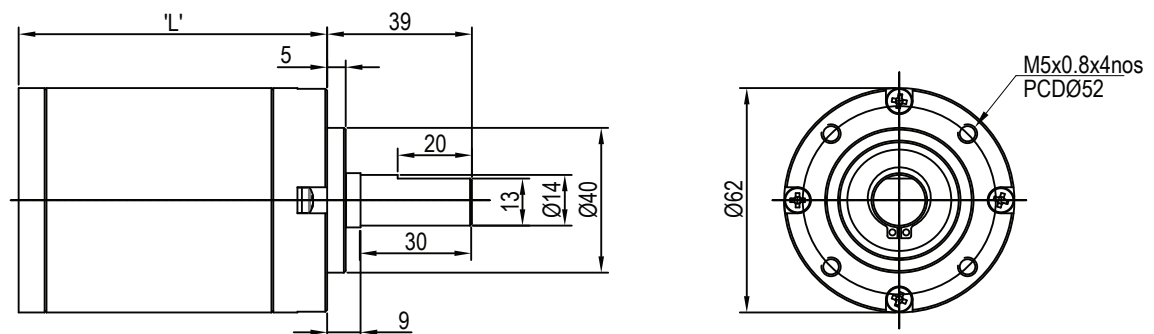
# Corresponding o/p torque rating of gearhead will be reduced

## Gearhead Data

Reduction		3.71	5.18	13.73	19.2	26.85	35*	50.89	71.16	99.51	139.14	188.61	263.73	369.76	515.63	720.99	938.85*
Number of stages		1	1	2	2	2	2	3	3	3	3	4	4	4	4	4	4
Torque	Nm	12	12	20	20	20	20	35	35	35	35	50	50	50	50	50	50
Gear Box Length (L)	mm	34.6	34.6	47.6	47.6	47.6	47.6	60.6	60.6	60.6	60.6	73.6	73.6	73.6	73.6	73.6	73.6

Note: Ratios marked with \* suffix available on special request

## Dimensional Drawing



# GB62K



Planetary Reduction Gearhead - 4 to 15 Nm

## Design

Gearhead GB62P is specially designed to cater space constant application with high torque in a cylindrical frame with centre shaft. This is a planetary gear box with all the plastic gears. The entire gearhead is permanently lubricated and therefore requires no maintenance. Brushed and Brushless DC Motors upto 62mm diameter are generally mounted on this gearhead to provide a compact and yet powerful drive.

## Technical Data

Gear type		Spur Gears
Gear Torque	Nm	4 to 15
Axial Load	N	150
Radial force	N	450
Output Bearings		Ball bearing
Output shafts	mm	Ø 14 (others on special request)
Ambient temperature operation	°C	-15.....+55 °C (+80 °C on special request #)
Enclosure	IP	40 (As per IEC 60529)

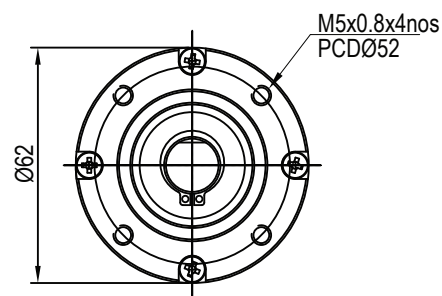
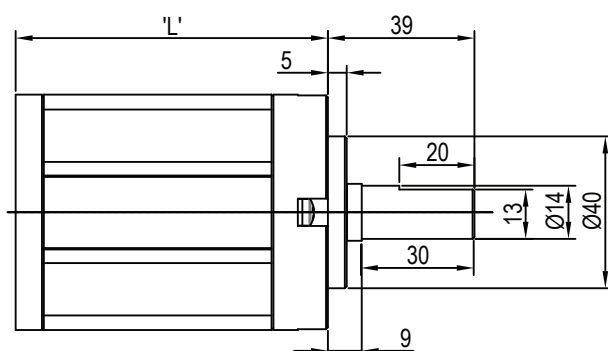
# Corresponding o/p torque rating of gearhead will be reduced

## Gearhead Data

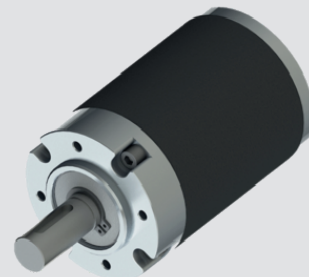
Reduction		3.71	5.18	13.73	19.2	26.85	35*	50.89	71.16	99.51	139.14	188.61	263.73	369.76	515.63	720.99	938.85*
Number of stages		1	1	2	2	2	2	3	3	3	3	4	4	4	4	4	4
Torque	Nm	4	4	7.5	7.5	7.5	7.5	10	10	10	10	15	15	15	15	15	15
Gear Box Length (L)	mm	34.6	34.6	47.6	47.6	47.6	47.6	60.6	60.6	60.6	60.6	73.6	73.6	73.6	73.6	73.6	73.6

Note: Ratios marked with \* suffix available on special request

## Dimensional Drawing



# GB82P



Planetary Reduction Gearhead - 20 to 120 Nm

## Design

Gearhead GB82P is specially designed to cater heavy duty application in a cylindrical frame with centre shaft. This is a planetary gear box with all metal gears ,with plastic gears in first stage. Ball bearings are used for higher torque requirement along with its increased life. The entire gearhead is permanently lubricated and therefore requires no maintenance. Brushed and Brushless DC Motors upto 92mm diameter are generally mounted on this gearhead to provide a compact and yet powerful drive.

## Technical Data

Gear type		Spur Gears
Gear Torque	Nm	20 to 120
Axial Load	N	150
Radial force	N	520
Output Bearings		Ball bearing
Output shafts	mm	Ø 19 (others on special request)
Ambient temperature operation	°C	-15.....+80 °C (+120°C on special request #)
Enclosure	IP	40 (As per IEC 60529)

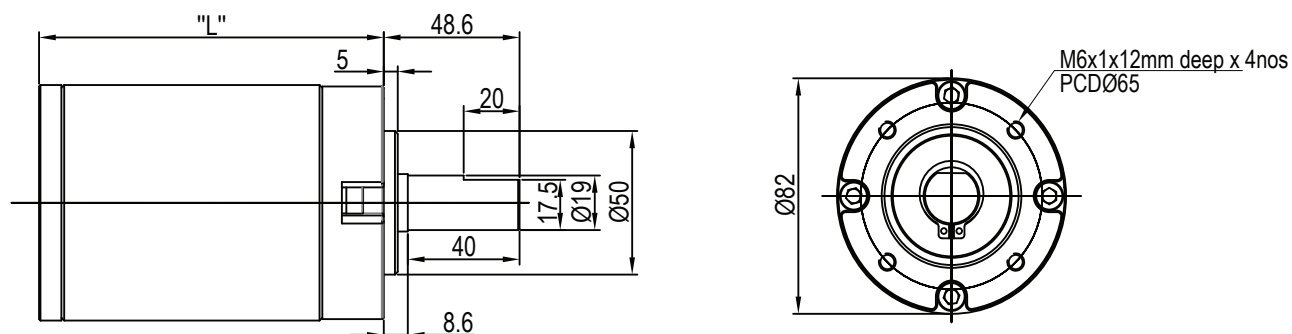
# Corresponding o/p torque rating of gearhead will be reduced

## Gearhead Data

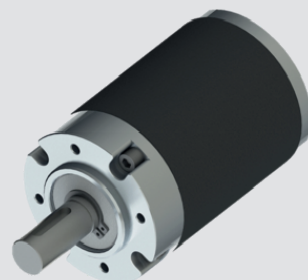
Reduction		3.71	5.18	13.73	19.2	26.85	35*	50.89	71.16	99.51	139.14	188.61	263.73	369.76	515.63	720.99	938.85*
Number of stages		1	1	2	2	2	2	3	3	3	3	4	4	4	4	4	4
Torque	Nm	20	20	60	60	60	60	80	80	80	80	120	120	120	120	120	120
Gear Box Length (L)	mm	60.4	60.4	81.4	81.4	81.4	81.4	102.4	102.4	102.4	102.4	123.4	123.4	123.4	123.4	123.4	123.4

Note: Ratios marked with \* suffix available on special request

## Dimensional Drawing



# GB82K



Planetary Reduction Gearhead - 10 to 50 Nm

## Design

Gearhead GB82K is specially designed to cater heavy duty application in a cylindrical frame with centre shaft. This is a planetary gear box with all metal gears ,with plastic gears in first stage. Ball bearings are used for higher torque requirement along with its increased life. The entire gearhead is permanently lubricated and therefore requires no maintenance. Brushed and Brushless DC Motors upto 92mm diameter are generally mounted on this gearhead to provide a compact and yet powerful drive.

## Technical Data

Gear type		Spur Gears
Gear Torque	Nm	10 to 50
Axial Load	N	150
Radial force	N	450
Output Bearings		Ball bearing
Output shafts	mm	Ø 19 (others on special request)
Ambient temperature operation	°C	-15.....+55 °C (+80°C on special request #)
Enclosure	IP	40 (As per IEC 60529)

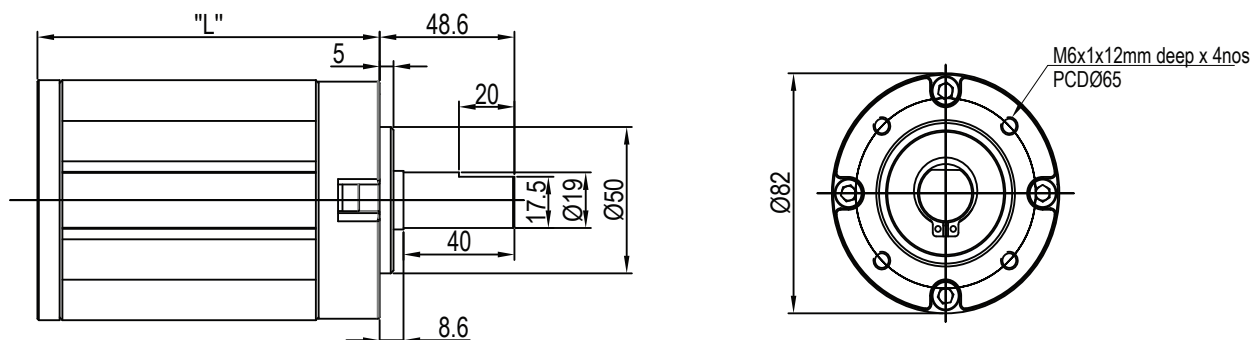
# Corresponding o/p torque rating of gearhead will be reduced

## Gearhead Data

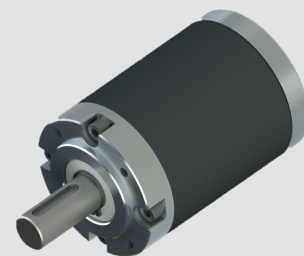
Reduction		3.71	5.18	13.73	19.2	26.85	35*	50.89	71.16	99.51	139.14	188.61	263.73	369.76	515.63	720.99	938.85*
Number of stages		1	1	2	2	2	2	3	3	3	3	4	4	4	4	4	4
Torque	Nm	10	10	20	20	20	20	35	35	35	35	50	50	50	50	50	50
Gear Box Length (L)	mm	60.4	60.4	81.4	81.4	81.4	81.4	102.4	102.4	102.4	102.4	123.4	123.4	123.4	123.4	123.4	123.4

Note: Ratios marked with \* suffix available on special request

## Dimensional Drawing



# GB102P



Planetary Reduction Gearhead - 40 to 200 Nm

## Design

Gearhead GB102P is specially designed to cater heavy duty application in a cylindrical frame with centre shaft. This is a planetary gear box with all metal gears ,with plastic gears in first stage. Ball berings are used for higher torque requirement along with its increased life. The entire gearhead is permanently lubricated and therefore requires no maintenance. Brushed and Brushless DC Motors upto 102mm diameter are generally mounted on this gearhead to provide a compact and yet powerful drive.

## Technical Data

Gear type		Spur Gears
Gear Torque	Nm	40 to 200
Axial Load	N	150
Radial force	N	520
Output Bearings		Ball bearing
Output shafts	mm	Ø 25 (others on special request)
Ambient temperature operation	°C	-15.....+80 °C (+120°C on special request #)
Enclosure	IP	40 (As per IEC 60529)

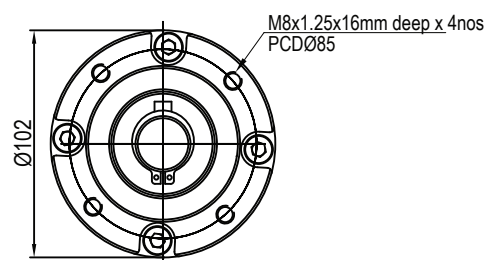
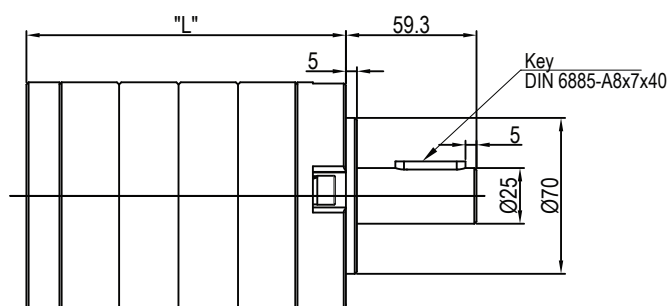
# Corresponding o/p torque rating of gearhead will be reduced

## Gearhead Data

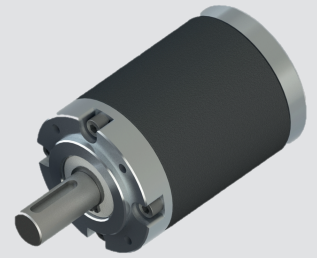
Reduction		3.71	5.18	13.73	19.2	26.85	35*	50.89	71.16	99.51	139.14	188.61	263.73	369.76	515.63	720.99	938.85*
Number of stages		1	1	2	2	2	2	3	3	3	3	4	4	4	4	4	4
Torque	Nm	40	40	80	80	80	80	140	140	140	140	200	200	200	200	200	200
Gear Box Length (L)	mm	74.6	74.6	98.1	98.1	98.1	98.1	121.6	121.6	121.6	121.6	145.1	145.1	145.1	145.1	145.1	145.1

Note: Ratios marked with \* suffix available on special request

## Dimensional Drawing



# GB102K



Planetary Reduction Gearhead - 20 to 80 Nm

## Design

Gearhead GB102K is specially designed to cater heavy duty application in a cylindrical frame with centre shaft. This is a planetary gear box with all plastic gears. Ball bearings are used for higher torque requirement along with its increased life. The entire gearhead is permanently lubricated and therefore requires no maintenance. Brushed and Brushless DC Motors upto 102mm diameter are generally mounted on this gearhead to provide a compact and yet powerful drive.

## Technical Data

Gear type		Spur Gears
Gear Torque	Nm	20 to 80
Axial Load	N	150
Radial force	N	450
Output Bearings		Ball bearing
Output shafts	mm	Ø 25 (others on special request)
Ambient temperature operation	°C	-15.....+55 °C (+80°C on special request #)
Enclosure	IP	40 (As per IEC 60529)

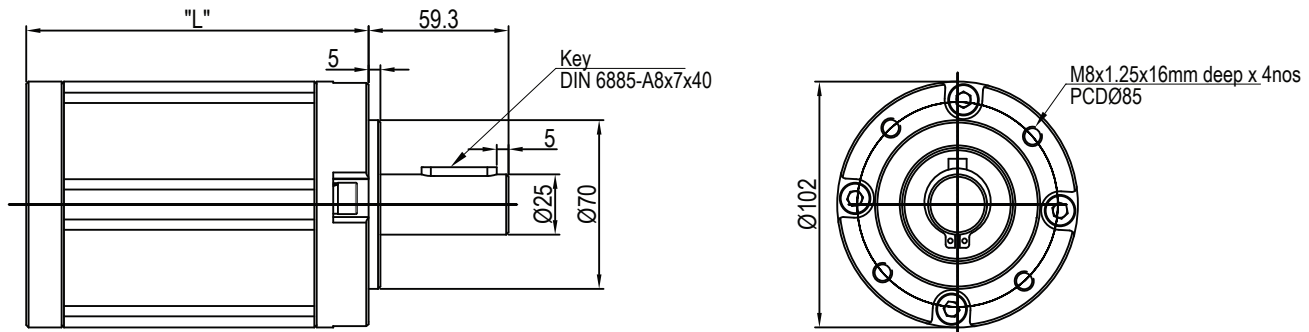
# Corresponding o/p torque rating of gearhead will be reduced

## Gearhead Data

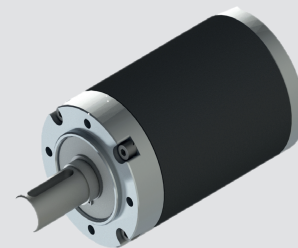
Reduction		3.71	5.18	13.73	19.2	26.85	35*	50.89	71.16	99.51	139.14	188.61	263.73	369.76	515.63	720.99	938.85*
Number of stages		1	1	2	2	2	2	3	3	3	3	4	4	4	4	4	4
Torque	Nm	20	20	35	35	35	35	60	60	60	60	80	80	80	80	80	80
Gear Box Length (L)	mm	74.6	74.6	98.1	98.1	98.1	98.1	121.6	121.6	121.6	121.6	145.1	145.1	145.1	145.1	145.1	145.1

Note: Ratios marked with \* suffix available on special request

## Dimensional Drawing



# GB122P



Planetary Reduction Gearhead - 48 to 295 Nm

## Design

Gearhead GB122P is specially designed to cater heavy duty application in a cylindrical frame with centre shaft. This is a planetary gear box with all metal gears ,with plastic gears in first stage. Ball berings are used for higher torque requirement along with its increased life. The entire gearhead is permanently lubricated and therefore requires no maintenance. Brushed and Brushless DC Motors upto 120mm diameter are generally mounted on this gearhead to provide a compact and yet powerful drive.

## Technical Data

Gear type		Spur Gears
Gear Torque	Nm	48 to 295
Axial Load	N	150
Radial force	N	520
Output Bearings		Ball bearing
Output shafts	mm	Ø 32 (others on special request)
Ambient temperature operation	°C	-15.....+80 °C (+120°C on special request #)
Enclosure	IP	40 (As per IEC 60529)

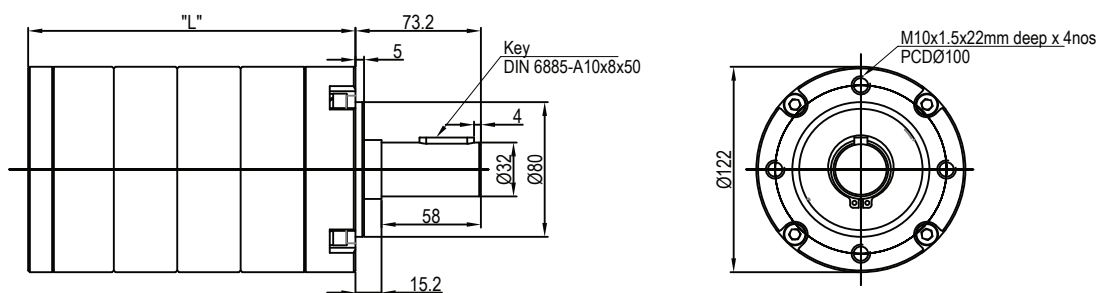
# Corresponding o/p torque rating of gearhead will be reduced

## Gearhead Data

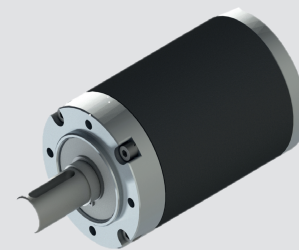
Reduction		3.71	5.18	13.73	19.2	26.85	35*	50.89	71.16	99.51	139.14	188.61	263.73	369.76	515.63	720.99	938.85*
Number of stages		1	1	2	2	2	2	3	3	3	3	4	4	4	4	4	4
Torque	Nm	48	48	100	100	100	100	200	200	200	200	200	295	295	295	295	295
Gear Box Length (L)	mm	99.5	99.5	130	130	130	130	160.5	160.5	160.5	160.5	191	191	191	191	191	191

Note: Ratios marked with \* suffix available on special request

## Dimensional Drawing



# GB122K



Planetary Reduction Gearhead - 30 to 100 Nm

## Design

Gearhead GB122K is specially designed to cater heavy duty application in a cylindrical frame with centre shaft. This is a planetary gear box with all plastic gears. Ball bearings are used for higher torque requirement along with its increased life. The entire gearhead is permanently lubricated and therefore requires no maintenance. Brushed and Brushless DC Motors upto 120mm diameter are generally mounted on this gearhead to provide a compact and yet powerful drive.

## Technical Data

Gear type		Spur Gears
Gear Torque	Nm	30 to 100
Axial Load	N	150
Radial force	N	450
Output Bearings		Ball bearing
Output shafts	mm	Ø 32 (others on special request)
Ambient temperature operation	°C	-15.....+55 °C (+80°C on special request #)
Enclosure	IP	40 (As per IEC 60529)

# Corresponding o/p torque rating of gearhead will be reduced

## Gearhead Data

Reduction		3.71	5.18	13.73	19.2	26.85	35*	50.89	71.16	99.51	139.14	188.61	263.73	369.76	515.63	720.99	938.85*
Number of stages		1	1	2	2	2	2	3	3	3	3	4	4	4	4	4	4
Torque	Nm	30	30	50	50	50	50	80	80	80	80	80	100	100	100	100	100
Gear Box Length (L)	mm	99.5	99.5	130	130	130	130	160.5	160.5	160.5	160.5	191	191	191	191	191	191

Note: Ratios marked with \* suffix available on special request

## Dimensional Drawing

